

FRANK | technologies for the construction industry

english version



1962 Fibre concrete

1968 Noxcreta release agent

1976 Trennfit release agents

1982 Stabox rebar connection system

1983 U-Korb high chair spacers

1983 Egco-box - cantilever connection systems

1985 Engineer binder - first technical documentation

1986 Pecafil universal formwork system

1987 Intec injection system

1988 Profiled sheet steel box-out shutters

1990 Threaded steel coupler system

1991 Zemdrain® controlled permeability formliners

1991 Stremaform joint systems

1992 Fibre cement panels

1993 Cresco expanding waterstop

1994 Tubbox column formers

1995 Egcodorn - shear force dowel system

1996 Fratec decorative formwork

1999 Acoustics



MAX FRANK international

Frank and its subsidiaries are an international group, with products and services from the three business units of FRANK, PECA and EGCO we supply spacer systems; reinforcement technology; sealing systems; formwork products, including the innovative Pecafil range; Stremaform jointing and Egco-box connection and dowel units, together with a variety of acoustic solutions for modern building. You will find us in more than 30 countries.



the chronology of success

2001 Tubbox Multi multi-use column formers
2003 Fracifix sandwich panel crack control systems
2006 Integrated sales operations for FRANK, PECA and EGCO
2007 Expansion of production facilities into the Middle East

Max Frank GmbH & Co. KG was founded in 1962. It was followed by PECA-Verbundtechnik GmbH in 1981 and EGCO AG in 1982.

From the first product, the distance tube, evolved our fibre concrete business. These products, together with a further seven product groups now form the core of the group's business. With over 150 patents already granted, we are continuing to develop innovative products and services for an expanding international construction industry.



MAX FRANK Germany
PECA-Verbundtechnik Germany
EGCO Switzerland
ABSTA Austria
FRANK Italy
MAX FRANK Poland
FRANK Slovakia
MAX FRANK Middle East
MAX FRANK Ukraine
MAX FRANK Singapore



experience, know-how, innovation



The Company continues to be guided, as it has been since its foundation, by the core values of quality, security in engineering and continuous improvement. Our success as an enterprise has been as a result of our adherence to these maxims.

And so it will continue; we set everything by these values in the pursuit of customer satisfaction, a goal to which the entire organisation is dedicated.



Our strength lies in our reliability and competence in the area of reinforced concrete construction – from major infrastructure projects to small building works.

Our internal and external service staff engage in continuing professional development to ensure that we are always qualified to provide comprehensive state of the art solutions that reflect project needs.



Technical competence combined with in-house engineering allows us to develop individual solutions for each project.

An order-based 'just in time' production facility and sophisticated logistics and warehousing guarantee punctual, fast and consistent delivery.

In support of this we use a vigorous, 'live' quality management system, backed up by independent monitoring, to provide coordinated operational planning in production, dispatch and sales.



technologies for the construction industry



customer focused solutions

FRANK | product divisions

Construction creates landmarks in time. Architects and developers produce visions and messages in fascinating infrastructure, buildings or bridges. They must master the conflicting forces of high value in use, technical feasibility, aesthetic contribution, cost control and not least of all safety. This is possible only with innovative and customer-oriented project specific solutions.

Since our establishment in 1962 we have developed this as our strength. We have the know-how, the production capacity and the experience to analyse applications with our customers and provide tailored solutions.

Whether it's bespoke formwork elements using Stremaform in conjunction with Intec sealing systems, or Egcodorn shear force dowel system, or a specially created column former using Fratec, or Zemdrain with Tubbox, which we can manufacture to your design within a short lead time, or Egcobox, Stabox or indeed any combination of our products and services...

Together we can find the ideal solution.

■ Fibre concrete



■ Reinforcement technology



■ Sealing systems



■ Formwork systems



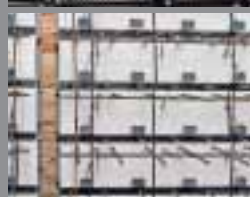
■ Pecafil



■ Stremaform



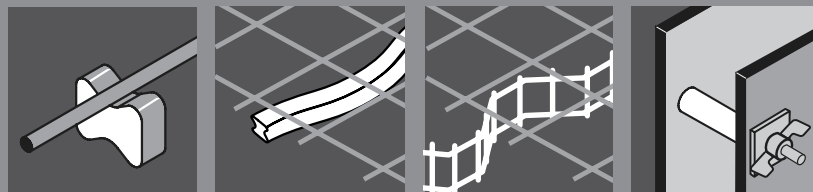
■ Egcobox



■ Acoustic insulation



FRANK | fibre concrete



certainty of concrete cover

With our range of fibre-reinforced concrete spacers and distance tubes we can ensure consistency in concrete cover within reinforced concrete buildings and other construction projects units prior to and during the concrete pour.

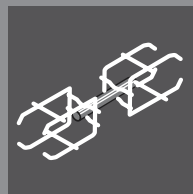
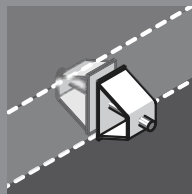
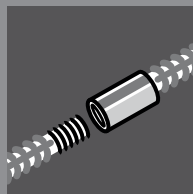
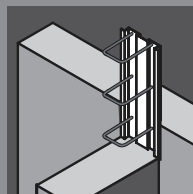
For each application or project we have a tailored solution.

The outstanding material properties of fibre-concrete spacers provide high load-bearing and fire resistance, whilst the affinity of the material to the surrounding pour prevents water permeating through to the steel reinforcement at the same time as providing a visually identical material which is important in projects where the concrete surface is exposed or must meet certain technical standards such as potable water applications.



- **Single spacers** in fibre concrete
- **Bar** and **Special spacers**
- **Continuous high chairs**
- **Distance tubes** in fibre concrete





modern reinforcement technology made to measure

Simple continuation of reinforcement without the requirement to strip the formwork has become a technical requirement.

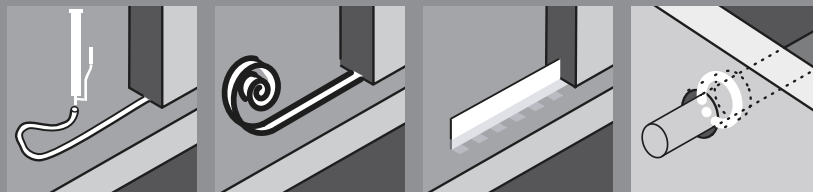
Our range includes Stabox rebar connection systems, threaded couplers and Titan and Egcodorn shear force dowel system.

In addition, special and bespoke products are available within short lead times. Our own internal quality management systems, supported by independent external audit guarantees conformance of our products to the highest quality standards.



- **Stabox** – Rebar connection systems
- **Coupler** – Threaded couplers
- **Egcodorn** – Shear force dowel system
- **Titan** – Dowels



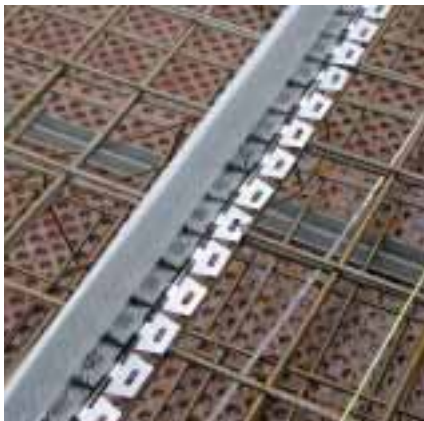


construction seals

Reliable sealing of construction joints, penetrations and exposed surfaces is a must where high quality or technical specification is required in concrete constructions.

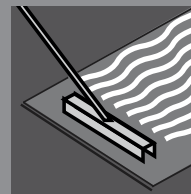
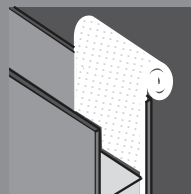
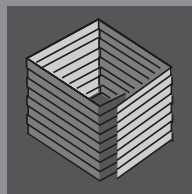
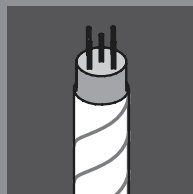
Our range includes a wide variety of solutions making them suitable for a diversity of applications.

You can rely on both our experience and the proven engineered security of our products and systems. Their simplicity in use ensures successful installation.



- **Intec** – Injection hose systems
- **Cresco** and **Swellstop** – Expanding waterstop
- **Fradiflex** – Watertight jointing strip
- **Permur** – Liner pipes





formwork technology – creative freedom

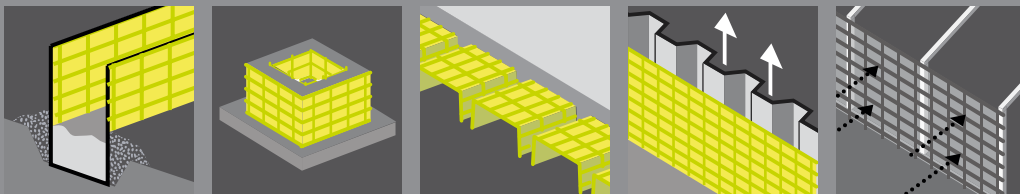
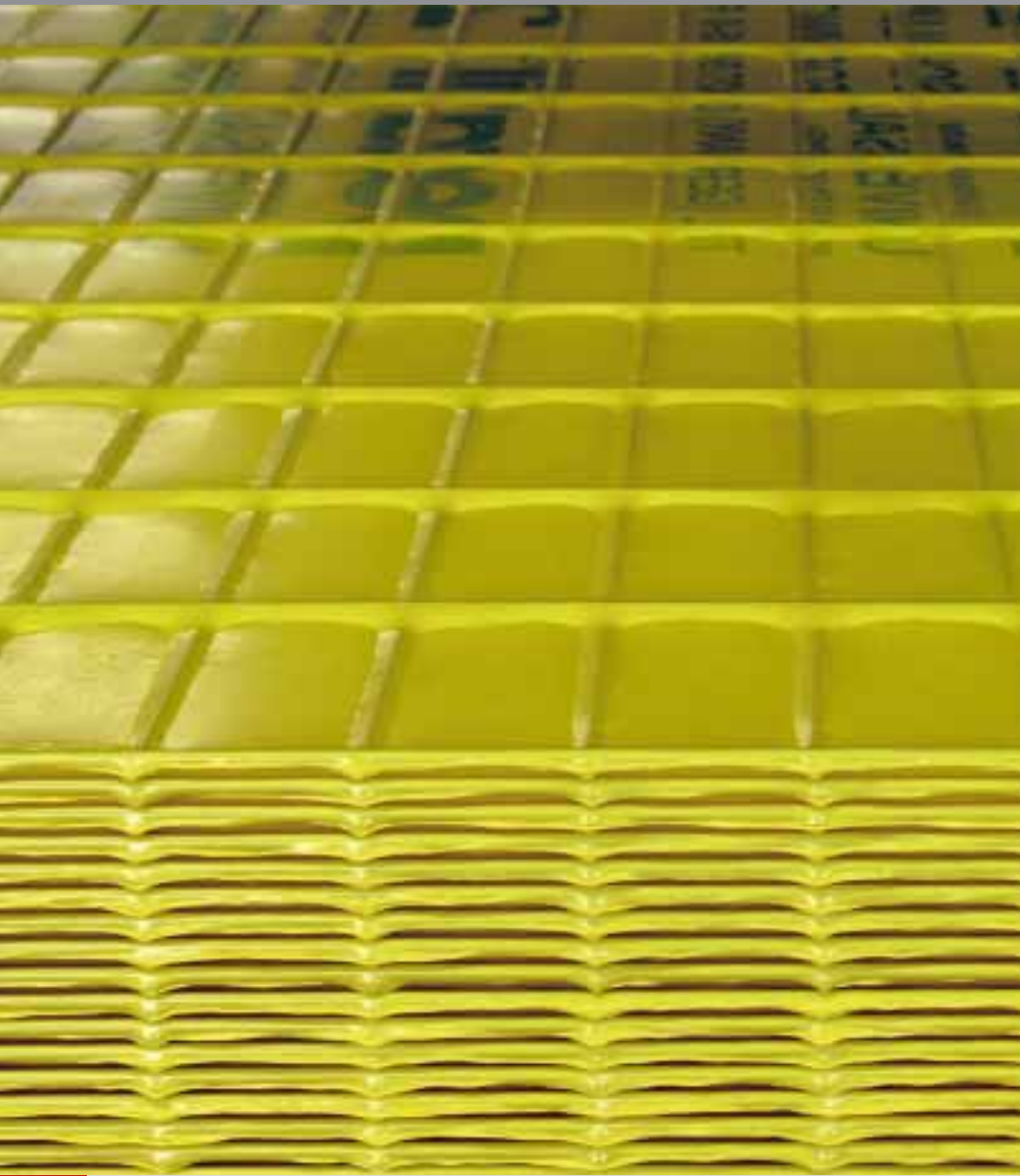
Our buildings are shaped by new concepts and ideas as well as personal wishes.

By using Tubbox column formers and Fratec profiled formwork, the freedom for architectural expression in columns, capitals, cornices and other elements becomes enabled. The width and variety of our range of formwork accessories has been created by successive project applications, and with Zemdrain® CPF liners the surface quality of exposed concrete can now be made to such a standard that was inconceivable in the past. A full range of accessories, including high quality release agents allows the preservation of both formwork and the environment.



- **Tubbox** and **Fratec** – column formers and profiled formwork
- **Formwork accessories**
- **Zemdrain®** – CPF liners of blowhole free concrete
- **Trenfit** – Concrete release agents



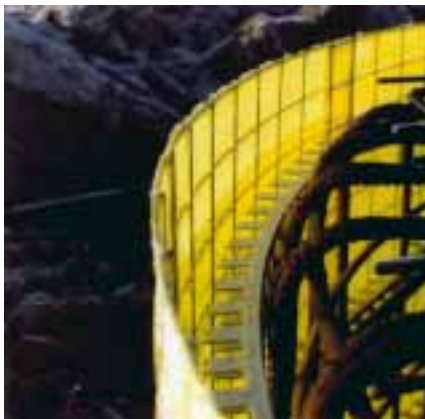


the universal formwork system plan creatively – build rationally

Pecafil universal formwork is made from steel mesh sandwiched by two layers of heat shrunk polyethylene.

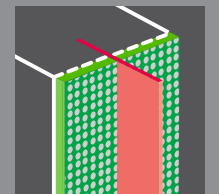
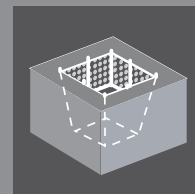
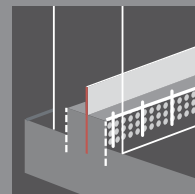
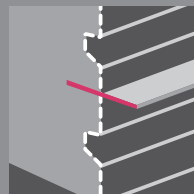
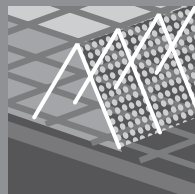
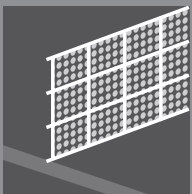
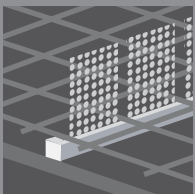
Areas of application for Pecafil include foundation shuttering, ribbed slab floor formworks and recessed forms. It may also be used for temporary weather and dust protection.

Pecafil universal formwork is an environmentally friendly, recyclable and biologically degradable whilst having no effect on groundwater.



- **Foundation shuttering**
- **Recessed and profiled formwork**
- **Ribbed and waffle slab formwork**
- **Pile caps and bases**
- **Weather/Dust protection and visual screening**





special fittings for jointing in reinforced concrete construction

Stremaform consists of a layer of expanded metal lath welded between two layers of metal mesh. This creates a rigid material, which is used as lost formwork for both working and expansion joints in reinforced concrete construction.

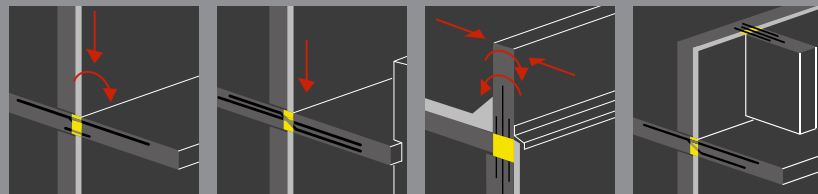
Stremaform can be used in every area of building, where a joint or a recess is required. In concreting against the Stremaform element the first pour binds itself and therefore offers thus a key surface for the following second pour.

Stremaform is made according to the specific requirements of the project and supplied as finished element to the building site.



- **Spacer**
- **Sheet material**
- **Formwork elements with metal joint strips**
- **Formwork elements with PVC joint strips**
- **Wall/Slab kicker formwork**
- **Box-out shutters**
- **Control joints, Expansion joints**





the independent cantilever connection system

Since 1997, the Egcobox system has been as a certified system for eliminating cold bridges between buildings cantilevered constructions such as balconies, corbels, balustrades and parapets, etc.

One of the attractions of Egcobox is it's flexibility: as well as a standard range of elements it is possible to adapt the Egcobox to satisfy specific geometric and loading requirements.

Product is manufactured to order on a short lead time and is supplied direct to site.



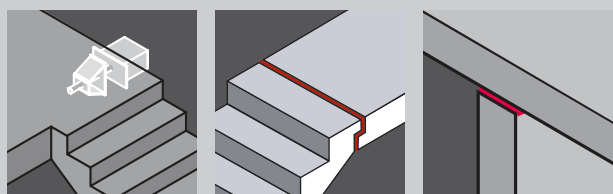
- **Egcobox** – for balconies and deck level access
- **Egcobox** – for cantilevered beams and walls
- **Egcobox** – for corbels and parapets
- **Egcobox** – special elements



FRANK | acoustic and static load technology

Environmental influences can have a profoundly adverse effect upon people's quality of living. There is a continuous need to take appropriate measures that will provide the maximum protection against effects such as sound, particularly within one's own four walls. FRANK's sound insulation product range offers you highly effective solutions for the reduction of structure-borne sound such as impact sound transmission.

Egcodist floor bearing prevents cracks in the masonry, which may be caused by differential movements of the structure's components which may result from shrinkage, creep or temperature differentials.



- **Egcotritt** – stair landing support
- **Egcoscal** – stair-landing decoupler
- **Egcodist** – wall and floor bearings

FRANK | references

■ Casa da musica, Porto (PT)



■ Potable water reservoir, Brisbane (AU)



■ Lehrter railway station, Berlin (D)



■ River City, Prague (CZ)



■ Burj Dubai Tower, Dubai (AE)



■ RZVK Tower, Cologne (D)



■ Museum, Neuss (D)



■ Bridgewater Place, Leeds (UK)



■ SAZKA Ice Rink, Prague (CZ)



■ Museum, Bremerhaven (D)



Mitterweg 1 · 94339 Leiblfing · Germany
Phone +49 (0) 94 27 / 1 89-0 · Fax +49 (0) 94 27 / 1 89-2 25
info@maxfrank.com
www.maxfrank.com



PECA-Verbundtechnik GmbH

Industriestraße 4-8
96332 Pressig
Germany
Phone +49(0)9265/951-0
Fax +49(0)9265/951-20
www.peca.de
info@peca.de

EGCO AG

Industriestrasse 100
3178 Böisingen
Switzerland
Phone +41 (0) 31 / 7 40 55 55
Fax +41 (0) 31 / 7 40 55 56
www.egco.ch
info@egco.ch

ABSTA GmbH & Co. KG

Weinburg/Waasen
3200 Obergrafendorf
Austria
Phone +43(0)2747/2378-0
Fax +43(0)2747/237885
www.absta.at
info@absta.at

Frank Italy S.r.l.

Zona Industriale Molini 6
39032 Campo Tures
Italy
Phone +39 (0) 4 74 / 65 90 08
Fax +39 (0) 4 74 / 65 90 18
www.frank-italy.com
info@frank-italy.com

Max Frank Oddział

w Polsce
ul. Łopuszańska 36
02-220 Warszawa
Poland
Phone +48(0)22/5770581
Fax +48(0)22/8462737
www.pl.maxfrank.com
info@pl.maxfrank.com

Frank-Slovakia, s.r.o.

ul. J. Haška 1
94901 Nitra
Slovakia
Phone +421 (0) 37 / 652 2885
Fax +421 (0) 37 / 655 41 33
www.sk.maxfrank.com
info@sk.maxfrank.com

Max Frank Ukraine

Luteranska street 16
Office 9
01024 Kiev
Ukraine
Phone +380442797961
Fax +380442797961
www.ua.maxfrank.com
info@ua.maxfrank.com

Frank Middle East

P.O.Box 121430
Dubai
UAE
Phone +971 4 609 17 00
Fax +971 4 609 17 01
www.ae.maxfrank.com
info@ae.maxfrank.com

Max Frank Singapore

Singapore
Representative Office
6 Jalan Tua Kong
#04 – 10
Singapore 457269
Phone +65 - 62 43 93 69
Fax +65 - 62 43 93 67
www.sg.maxfrank.com
info@sg.maxfrank.com

